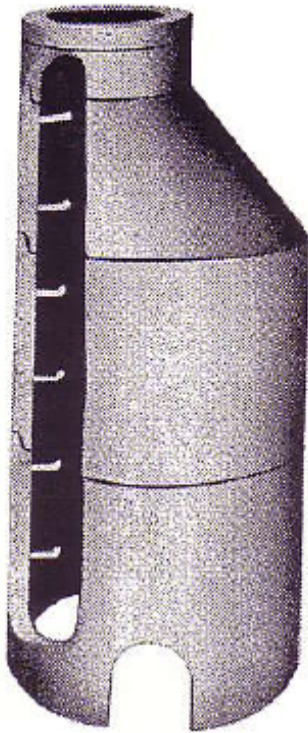




PRECAST CONCRETE MANHOLES



Manholes of all sizes are manufactured to specifications A.S.T.M. C-478. These specifications include risers, cone sections, and flat tops.

4" & 8" Adjusting Rings As Required

48" I.D. Cone x 36"

54" I.D. Cone x 36"

60" I.D. Cone x 36"

All Riser Sections 16", 32" or 48"

Steps at 16" C. – C.

Bottom sections may be flat, blocked out or boots for pipe connections.

Special manholes, wet wells and lift stations can also be made in any standard pipe size from 48" to 96" with flat tops, in accordance with A.S.T.M. specifications C-478.