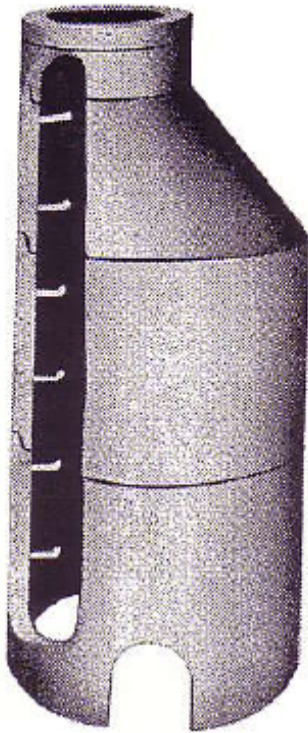




# PRECAST CONCRETE MANHOLES



Manholes of all sizes are manufactured to specifications A.S.T.M. C-478. These specifications include risers, cone sections, and flat tops.

**4", 6" & 8" Adjusting Rings As Required**

**48" I.D. Cone x 36"**

**54" I.D. Cone x 36"**

**60" I.D. Cone x 44"**

**All Riser Sections 16", 32" or 48"**

**Steps at 16" C. – C.**

**Bottom sections may be flat, blocked out for pipe or with extended monolithic floor and connector boots for pipe connections.**

Special manholes, wet wells and lift stations can also be made in any standard pipe size from 48" to 96" with flat tops, in accordance with A.S.T.M. specifications C-478.